

AC Voltage Simple Logger® Models L205, L230 & L260



Specifications

ELECTRICAL

Number of Channels: 1

Measurement Range:

0 to 25Vrms (L205)

0 to 300Vrms (L230)

0 to 600Vrms (L260)

Input Connection:

Recessed Safety 4mm Banana Jacks

Resolution: 8 Bit

L205: 12.5mV max

L230: 250mV max

L260: 500mV max

Accuracy*: ±1% of Reading + Resolution

(see inside back cover for details)

Sample Rate: 4096/hr max, decreases

by 50% each time memory is full

Storage Technique:

Time Extension Recording™ (TXR™)

Data Storage: 8192 readings

Power: 9V Alkaline battery

Battery Life:

Up to 1 yr of recording @ 25°C

Output: RS-232 via DB-9 connector

Indicators: Red LED double flashes in LOGGING, single flashes in STANDBY, and is off in OFF mode

Controls: One button used to start and stop recording sessions and to turn the data logger on and off

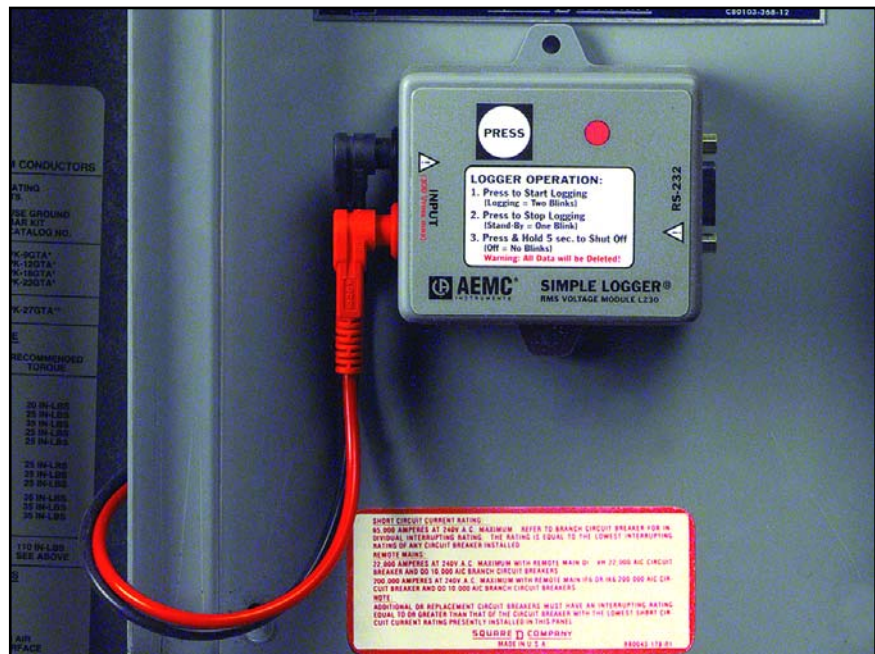
MECHANICAL

Size: 27/8 x 25/16 x 15/8"

(73 x 59 x 4mm)

Weight: (with battery) 5 oz (140g)

Mounting: Base plate mounting holes or Velcro® pads



ENVIRONMENTAL

Operating Temperature:

-4 to +158°F (-20 to +70°C)

Storage Temperature:

-4 to +174°F (-20 to +80°C)

Relative Humidity:

5 to 95% non-condensing

Features

- Three input types to choose from:
 - Model L205
0 to 25Vrms input (stray voltage)
 - Model L230
0 to 300Vrms input
 - Model L260
0 to 600Vrms input

- True RMS measurements
- Inputs via color coded safety Banana Jacks
- Scale automatically selected by software
- Includes test leads and alligator clips

Applications

- HVAC troubleshooting
- Line voltage monitoring
- Surge/Sag monitoring
- Stray voltage monitoring
- Dropout monitoring

ORDERING INFORMATION

CATALOG NO.

Simple Logger® Model L205, Stray Voltage with Leads (0 to 25.5VAC Input) Cat. #2116.05

Simple Logger® Model L230, RMS Voltage with Leads (0 to 300VAC Input) Cat. #2113.93

Simple Logger® Model L260, RMS Voltage with Leads (0 to 600VAC Input) Cat. #2113.94

All AC Voltage Simple Loggers® are supplied with software (CD-ROM), 6 ft DB-9 RS-232 cable, 9V Alkaline battery, 5 ft lead set, and user manual

Accessories

Safety Grip Probes, set of 2 Cat. #2111.31

110V US Outlet Adaptor with Banana Jacks (for Models L230 or L260) Cat. #2118.49

Voltage Leads, (2) with clips, 5 ft. Cat. #2118.51



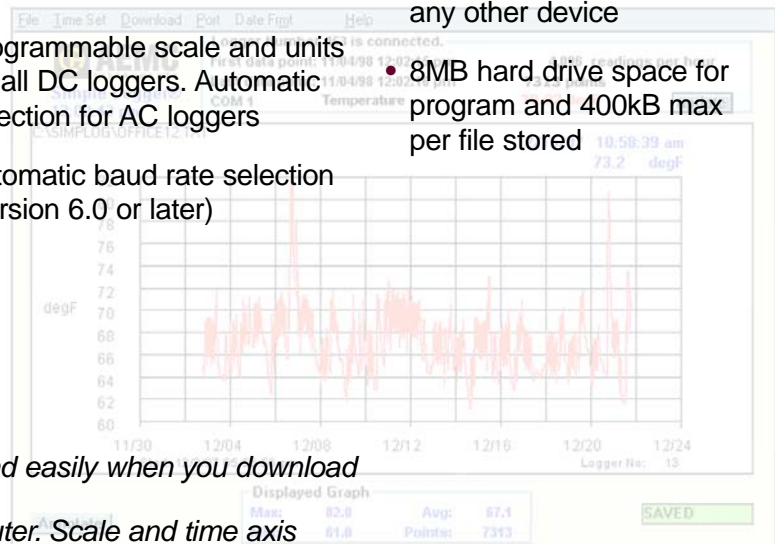
Simple Logger® Software

Features

- Very easy to setup and use — no programming required
- Statistics appear on screen: Max, Min, Avg, Date and Time
- On-Line display of data logger values
- Zoom capability with automatic statistics update
- User keyed text annotations
- Automatically displays values at the cursor position
- Export data to spreadsheet and database software
- Print both graphs and tabular listings
- Paste graphs into other applications
- Programmable scale and units for all DC loggers. Automatic selection for AC loggers
- Automatic baud rate selection (version 6.0 or later)

Computer Requirements

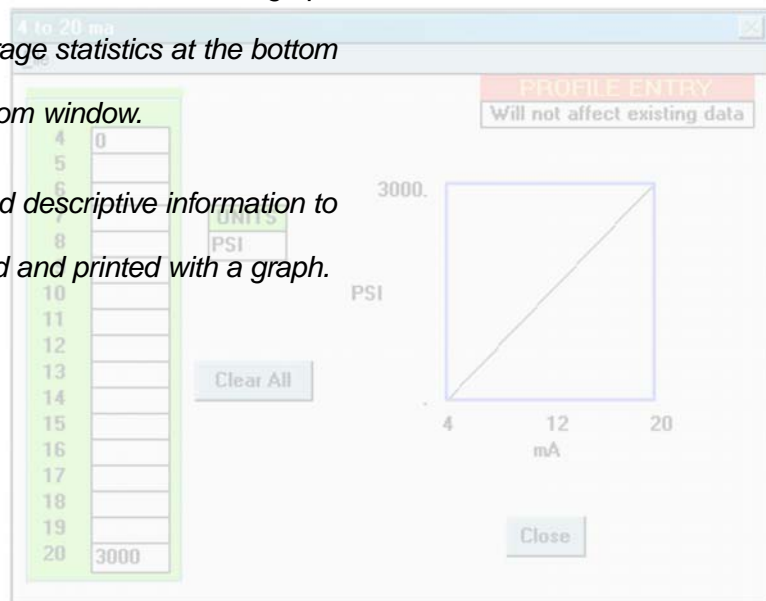
- 486 or higher
- 8MB of RAM
- Windows®95/98/2000/ME/XP or Windows®NT
- 1 serial port not in use by any other device
- 8MB hard drive space for program and 400kB max per file stored



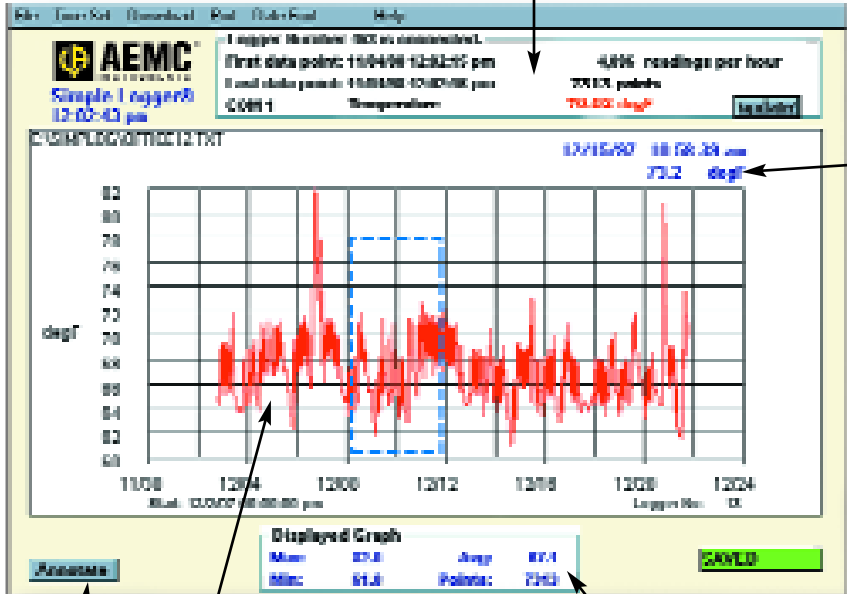
Plot graphs and view statistics quickly and easily when you download data from Simple Logger® to your computer. Scale and time axis update automatically.

Click and drag your mouse to zoom up the desired area of the graph for better viewing. The Min, Max and Average statistics at the bottom of the graph update automatically with zoom window.

Click the Annotate button to add a title and descriptive information to your graph. This information can be stored and printed with a graph.



On-line display of data

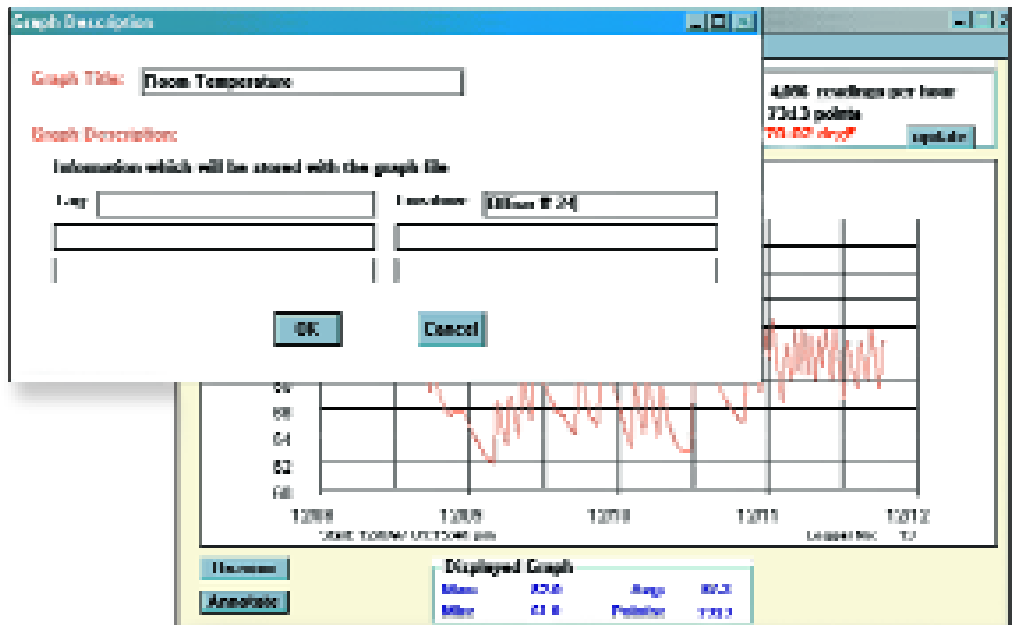


Automatic update of Y data at cursor position

Plot area with value and time data shown on the X and Y axis

Graph Statistics

Annotate button






Click the Annotate button to add a title and descriptive information to your graph. This information can be stored and printed with a graph.

Accessories



Split Core AC & DC Current Probes

AEMC® Instruments Current Probe & Simple Logger® Match Up

Series	Probe Model	Ratio	Measurement Range		Output Signal		Output Connection	Catalog No.	Logger Model
			AC	DC	Current	Voltage			
 $\phi = 0.78"$	MN211	1000:1	0.5A to 240A		1mAac/Aac		Lead	2115.73	L110
	MN213	1000:1	0.5A to 240A		1mAac/Aac		Lead	2115.75	L110
	MN251		0.1A to 240A			1mVac/Aac	Lead	2115.77	L100
	MD301		2A to 500A			1mVdc/Aac	Lead	1201.07	L430
	MD303	1000:1	4A to 500A		1mAac/Aac		Lead	1201.21	L110
	MD305	1000:1	1A to 600A		1mAac/Aac		Lead	1201.36	L110
	MD314		4A to 500A			1mVac/Aac	Lead	2110.75	L100
 $\phi = 1.18"$	MR410*		1A to 400A	1A to 600A		1mV/Aac 1mV/Adc	Lead Lead	1200.70 1200.70	L100 (AC) L430 (DC)
	MR411*		0.2A to 40A 0.5A to 400A	0.5A to 600A 0.4A to 60A 0.5A to 600A		10mV/Aac 1mV/Aac 10mV/Aac 1mV/Adc	Lead	1200.68	L100 (AC) L430 (DC)
	MR520*		1A to 1000A	1A to 1500A		1mV/Aac/dc 1mV/Aac/dc	Lead	1200.71	L100 (AC) L430 (DC)
 $\phi = 1.6"$	MR521*		0.2A to 1000A 0.5A to 1000A	0.4A to 150A 0.5A to 1500A		10mV/Aac 1mV/Aac	Lead	1200.69	L100 (AC)
			0.2A to 100A 0.5A to 1000A	0.4A to 1500A 0.5A to 1500A		10mV/Aac 1mV/Aac	Lead	1200.69	L430 (DC)
						10mV/Aac 1mV/Aac	Lead	1200.69	L430 (DC)
 $\phi = 2.05"$	SR604	1000:1	0.1A to 1000A		1mAac/Aac		Lead	2113.44	L110
	SR652		0.1A to 1000A			1mVac/Aac	Lead	2113.46	L100
	SR704	1000:1	1mA to 1000A		1mAac/Aac		Lead	2116.30	L110
	SR752		0.1A to 1000A			1mVac/Aac	Lead	2116.32	L100
 $\phi = 2.52"$	JM800A	1000:1	1A to 1000A		1mAac/A		Lead	2110.79	L110
	JM830A	3000:1	1A to 3000A		0.33mAac/A		Lead	2110.83	L110
	JM850A	1000:1 2000:1 3000:1	1A to 1000A 1A to 2000A 1A to 3000		1mAac/Aac .5mAac/Aac .33mAac/Aac		Jack Jack Jack	2110.87	L110

*Caution: Do not use DC loggers with AC probes or AC loggers with DC probes



2114.26
Simple Logger® Software
Upgrade for all models
(Receive software upgrade
notices when warranty
registration is on file)



2111.31
Safety Grip Probes,
set of 2

Flexible Probes for use with
Simple Logger® Model L100

AEMC® Instruments Flexible Probe & Simple Logger® Compatibility				
24" Flexible Probes				
Catalog No.	Probe Model	Range	Ratio	Logger Model
2112.20	200-24-1-1	200A	1mV/A	L100
2112.24	300-24-1-1	300A	1mV/A	L100
2112.34	500-24-1-1	500A	1mV/A	L100
2112.39	1000-24-1-1	1000A	1mV/A	L100
2112.62	6000-24-1-0.1	6000A	0.1mV/A	L100
2112.70	10000-24-1-0.1	10,000A	0.1mV/A	L100
2112.93	500-24-2-1	50/500A	10mV/1mV/A	L100
2112.98	1000-24-2-1	100/1000A	10mV/1mV/A	L100
2113.19	6000-24-2-0.1	600/6000A	1mV/0.1mV/A	L100
2113.27	10000-24-2-0.1	1,000/10,000A	1mV/0.1mV/A	L100
2114.87	3000-24-2-0.3	300/3000A	0.3mV/3.3mV/A	L100
36" Flexible Probes				
Catalog No.	Probe Model	Range	Ratio	Logger Model
2112.02	10000-36-2-0.1	1000/10,000A	1mV/0.1mV/A	L100
2112.41	1000-36-1-1	1000A	1mV/A	L100
2112.64	6000-36-1-0.1	6000A	0.1mV/A	L100
2112.72	10000-36-1-0.1	10,000A	0.1mV/A	L100
2113.00	1000-36-2-1	100/1000A	10mV/1mV/A	L100
2113.21	6000-36-2-0.1	600/6000A	1mV/0.1mV/A	L100
2114.88	3000-36-2-0.3	300/3000A	0.3mV/3.3mV/A	L100



AEMC® Instruments Flexible Probe & Simple Logger® Compatibility				
48" Flexible Probes				
Catalog No.	Probe Model	Range	Ratio	Logger Model
2112.03	10000-48-2-0.1	1000/10,000A	1mV/0.1mV/A	L100
2112.42	1000-48-1-1	1000A	1mV/A	L100
2112.65	6000-48-1-0.1	6000A	0.1mV/A	L100
2112.73	10000-48-1-0.1	10,000A	0.1mV/A	L100
2113.01	1000-48-2-0.1	100/1000A	10mV/1mV/A	L100
2113.22	6000-48-2-0.1	600/6000A	1mV/0.1mV/A	L100
60" Flexible Probes				
Catalog No.	Probe Model	Range	Ratio	Logger Model
2112.74	10000-60-1-0.1	10,000A	0.1mV/A	L100
2113.29	10000-60-2-0.1	1000/10,000A	1mV/0.1mV/A	L100

Contact Us

United States & Canada:

Chauvin Arnoux®, Inc.
d.b.a. AEMC® Instruments
200 Foxborough Blvd.
Foxborough, MA 02035 USA
(508) 698-2115 • Fax (508) 698-2118
www.aemc.com

Customer Support – for placing an order, obtaining price & delivery:
customerservice@aemc.com

Sales Department – for general sales information:
sales@aemc.com

Repair and Calibration Service – for information on repair & calibration, obtaining a user manual:
repair@aemc.com

Technical and Product Application Support – for technical and application support:
techinfo@aemc.com

Webmaster – for information regarding www.aemc.com:
webmaster@aemc.com

South America, Central America, Mexico, Caribbean, Australia & New Zealand:

Chauvin Arnoux®, Inc.
d.b.a. AEMC® Instruments
15 Faraday Drive
Dover, NH 03820 USA
(978) 526-7667 • Fax (978) 526-7605
export@aemc.com
www.aemc.com

All other countries:

Chauvin Arnoux SCA
190, rue Championnet
75876 Paris Cedex 18, France
33 1 44 85 45 28 • Fax 33 1 46 27 73 89
info@chauvin-arnoux.com
www.chauvin-arnoux.com